

RHOXF2B Antibody (Center)
Affinity Purified Rabbit Polyclonal Antibody (Pab)
Catalog # AP19180c**Specification**

RHOXF2B Antibody (Center) - Product Information

Application	WB, IF, E
Primary Accession	P0C7M4
Other Accession	Q9BOY4 , NP_001093155.1
Reactivity	Human
Host	Rabbit
Clonality	Polyclonal
Isotype	Rabbit IgG
Calculated MW	31637
Antigen Region	95-121

RHOXF2B Antibody (Center) - Additional Information**Gene ID** 727940**Other Names**

RhoX homeobox family member 2B, RHOXF2B

Target/Specificity

This RHOXF2B antibody is generated from rabbits immunized with a KLH conjugated synthetic peptide between 95-121 amino acids from the Central region of human RHOXF2B.

Dilution

WB~~1:1000

IF~~1:10~50

E~~Use at an assay dependent concentration.

Format

Purified polyclonal antibody supplied in PBS with 0.09% (W/V) sodium azide. This antibody is purified through a protein A column, followed by peptide affinity purification.

Storage

Maintain refrigerated at 2-8°C for up to 2 weeks. For long term storage store at -20°C in small aliquots to prevent freeze-thaw cycles.

Precautions

RHOXF2B Antibody (Center) is for research use only and not for use in diagnostic or therapeutic procedures.

RHOXF2B Antibody (Center) - Protein Information**Name** RHOXF2B ([HGNC:33519](#))

Function Transcription factor maybe involved in reproductive processes. Modulates expression of target genes encoding proteins involved in processes relevant to spermatogenesis.

Cellular Location

Nucleus {ECO:0000255|PROSITE-ProRule:PRU00108}.

Tissue Location

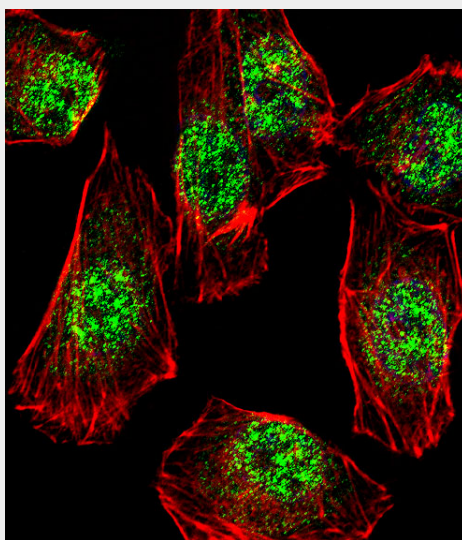
Expressed in testis, mainly expressed in germ cells, but also detected in somatic cells such as Sertoli cells, Leydig cells and peritubular cells.

RHOXF2B Antibody (Center) - Protocols

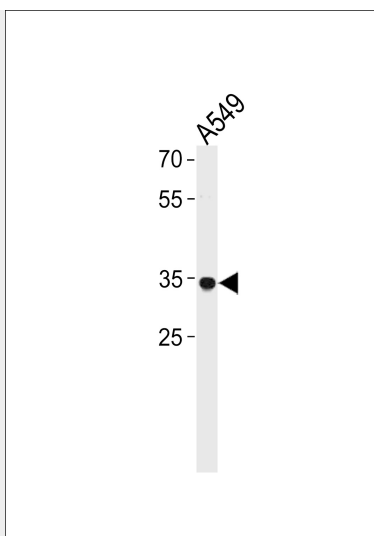
Provided below are standard protocols that you may find useful for product applications.

- [Western Blot](#)
- [Blocking Peptides](#)
- [Dot Blot](#)
- [Immunohistochemistry](#)
- [Immunofluorescence](#)
- [Immunoprecipitation](#)
- [Flow Cytometry](#)
- [Cell Culture](#)

RHOXF2B Antibody (Center) - Images



Fluorescent confocal image of A549 cell stained with RHOXF2B Antibody (Center)(Cat#AP19180c).A549 cells were fixed with 4% PFA (20 min), permeabilized with Triton X-100 (0.1%, 10 min), then incubated with RHOXF2B primary antibody (1:25, 1 h at 37°C). For secondary antibody, Alexa Fluor® 488 conjugated donkey anti-rabbit antibody (green) was used (1:400, 50 min at 37°C).Cytoplasmic actin was counterstained with Alexa Fluor® 555 (red) conjugated Phalloidin (7units/ml, 1 h at 37°C). Nuclei were counterstained with DAPI (blue) (10 µg/ml, 10 min).RHOXF2B immunoreactivity is localized to Nucleus significantly.



RHOXF2B Antibody (Center) (Cat. #AP19180c) western blot analysis in A549 cell line lysates (35ug/lane). This demonstrates the RHOXF2B antibody detected the RHOXF2B protein (arrow).

RHOXF2B Antibody (Center) - Background

The function of this protein remains unknown.